

System Firmware Update Instructions for AVIC-F60DAB, AVIC-F960DAB, AVIC-F960BT, AVIC-F860BT

REMARKS:

- ✓ If you have any difficulty carrying out these instructions, please contact Pioneer Customer Support. Once upgraded to this version, it is not possible to downgrade to a lower version.
- ✓ Please download and print these instructions before downloading and installing the firmware update. It is important that you complete all steps correctly and in the order described below.
- ✓ The only USB port that supports the firmware update is USB port 1, but you may also use the SD card slot.
- ✓ Never turn your unit off, eject the micro SD memory card or disconnect the USB storage device while the firmware is being updated.
- ✓ You can only update the firmware when the vehicle is stopped and the parking brake is engaged.
- ✓ The information on the registered Bluetooth device(s) will be deleted. Register the device(s) again after performing the firmware update.
- ✓ **Do NOT install this firmware to a Camper Van model.** You can check if you have a -C (-Camper) Model by checking the Firmware version; -C versions have Firmware version "8.01xxxx" or higher, check the below instructions how to display the version.
- ✓ **This firmware is NOT intended for US version products.**

IMPORTANT (For navigation system users)

- ✓ If you install this Firmware, all navigation function settings and save data will be formatted. Once the update has finished, you will need to reconfigure the settings.
- ✓ Any content purchased and added through Naviextras will also need to be re-installed. Note that no charges will be incurred to download previously purchased content.

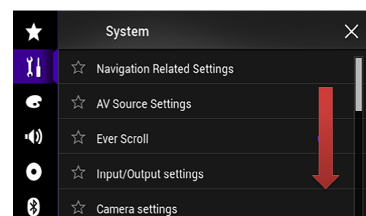
Displaying the firmware version

Check whether the firmware of your unit needs to be updated by checking the version number of the firmware.

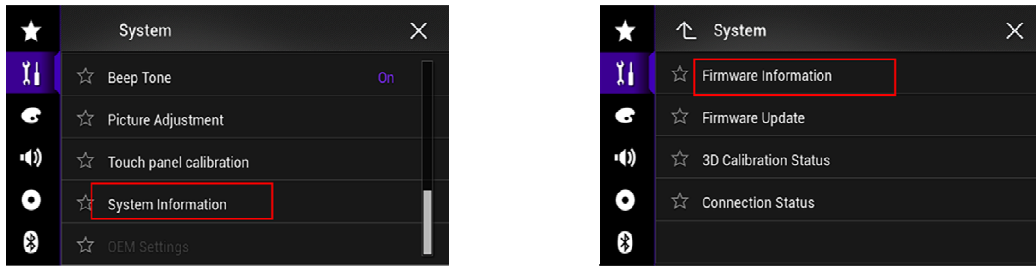
1. Press the HOME button to display the Top menu screen.
2. Touch the following keys in the following order.



3. The "System" screen appears, scroll down the list.



4. Touch [System Information], next touch [Firmware Information].



5. After the "Firmware Information" screen appears, check the firmware version number. If the firmware version is **1.14** or higher, it is not necessary to update the firmware. If the version number is lower than **1.14**, it is necessary to update the firmware. Please continue to Step B. **If the firmware version starts with 8 you have a Camper Van model and you should download a different firmware update file.**

A. Downloading the Firmware Update Files

1. Download the correct firmware file to a folder on your computer.
 - **European model (EW): AVIC-Fx60_EU5_FW_Ver_114.zip**
 - **Russian model (UW): AVIC-Fx60_UW5_FW_Ver_114.zip**
2. Double click the ZIP file to open it.
3. Extract and save the folder "AVIC5000NEX" to a folder on your computer.

B. Updating the firmware on your Unit

IMPORTANT

- ✓ Please DO NOT perform this firmware update if the model number of your Pioneer Navigation unit is anything other than the above listed models. (The model number of your unit can be found in the lower or upper right corner of the front panel.)
- ✓ Ensure that the update folder ("AVIC5000NEX") is located within the root (top) folder of your SD memory card or USB storage device. There should be no other files within the SD memory card or USB storage device.
- ✓ While your unit is being updated, DO NOT turn off the system's power and DO NOT touch the unit's touch panel as this may result in severe damage to your unit.
- ✓ DO NOT remove the SD memory card or USB storage device during the firmware update.
- ✓ Performing the firmware update will restore all settings to their default values.
- ✓ Before you start the update procedure, make sure to disconnect any mobile devices that are currently connected to your unit.

PROCEDURE:

1. Connect a blank (**FAT32 formatted and minimum capacity of 2GB**) micro SD memory card or USB storage device to your computer, and then locate the correct update folder ("AVIC5000NEX") and copy it onto the Root (top) folder of the micro SD

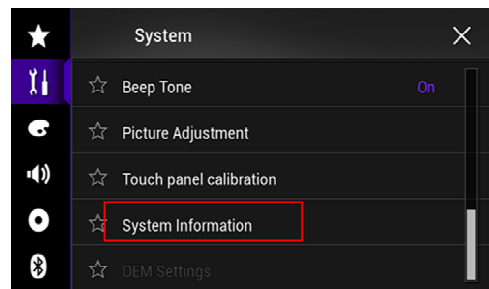
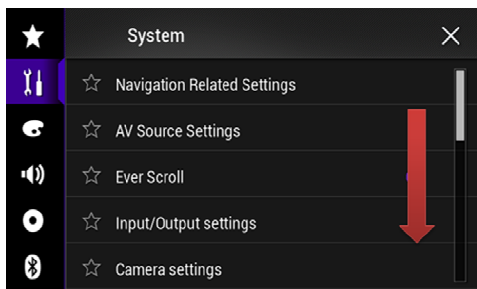
memory card or USB storage device.

2. Insert the micro SD memory card into the SD card slot or connect the USB storage device to USB port 1.
3. On your unit; turn the AV Source off.
4. Press the HOME button to display the Top menu screen.
5. Touch the following keys in the following order.

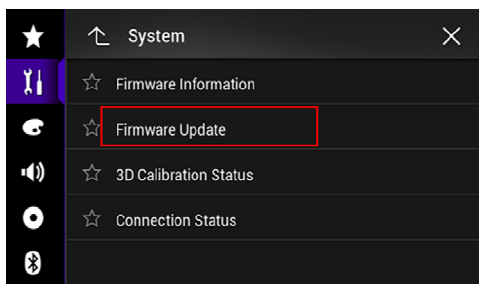


The "System" screen appears.

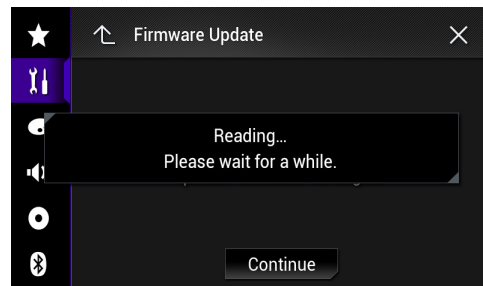
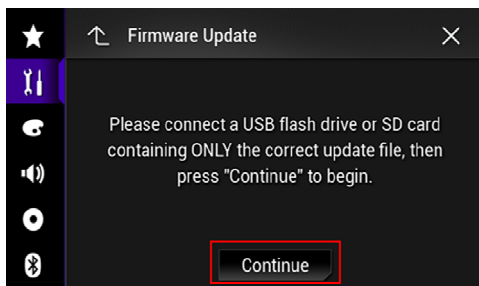
6. Scroll down the list and select [System Information].



7. Select [Firmware Update]. The "Firmware Update" screen appears.

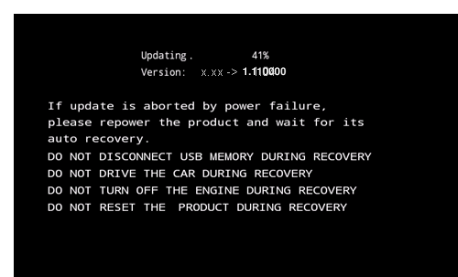
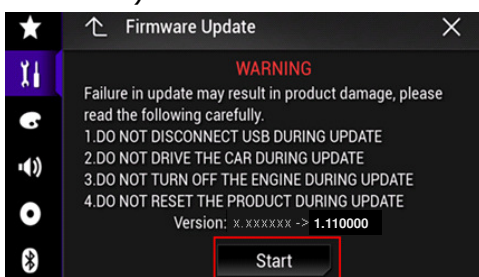


8. Select [Continue] to display the data transfer mode.



Wait for the file check to finish. Depending on the USB speed this can take a few minutes.

9. Touch [Start]. The progress status is shown. (Please note: Approximately one minute after the update has started, the receiver might restart itself and return to the below update screen)



10. Wait until the update process is complete (approx. 12 minutes).

Once the firmware update process is complete, the unit will display following screen:



11. Press the HOME button.

12. Remove the SD memory card or USB storage device.

13. The firmware update is complete.

Check the firmware version as described in "Displaying the firmware version" to confirm that the update was successful.

UPDATING BLUETOOTH SOFTWAREPROCEDURE

- ✓ Make sure the source is changed to the "off" source, and the Bluetooth connection is disconnected before the process starts.
- ✓ This setting is available only when you stop your vehicle in a safe place and apply the parking brake.
- ✓ **Never turn the product off while the software is being updated.**

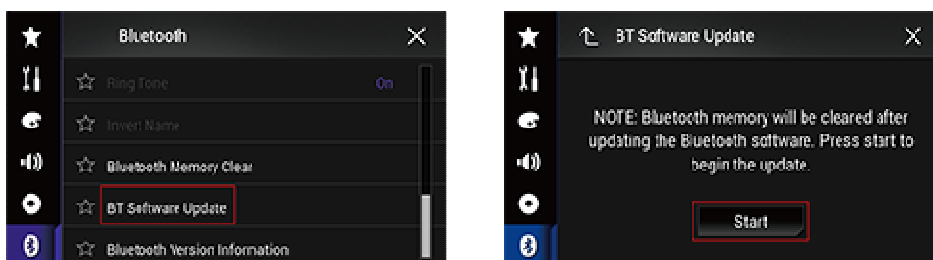
PROCEDURE:

1. Press the HOME button to display the Top menu screen.
2. Touch the following keys in the following order.



The "Bluetooth" screen appears.

3. Select [BT Software Update], next [Start].



The data transfer screen is displayed. Follow the on-screen instructions to finish updating the Bluetooth software. (approx. 6 minutes)

DISPLAYING THE BLUETOOTH SOFTWARE VERSION

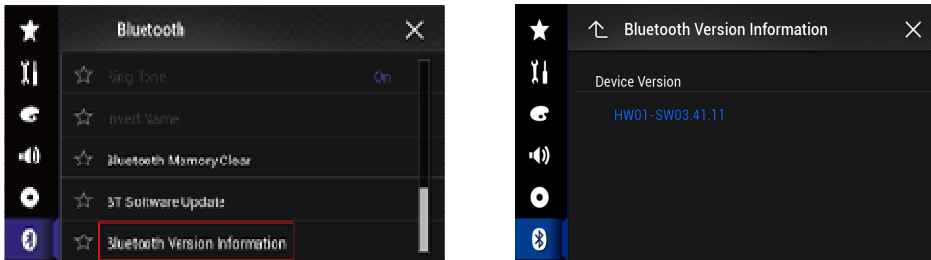
Perform the following procedure to check the version on this unit.

1. Press the HOME button to display the Top menu screen.
2. Touch the following keys in the following order.



The "Bluetooth" screen appears.

3. Select [Bluetooth Version Information]. The version of the Bluetooth module appears.



Firmware Update FAQ

Q: What if my set does not switch on automatically after updating the software or starts up more than once?

A: Turn off the ignition key and turn on again – the set should start up now.

Q: What if I cannot upgrade my set / the set does not show the start up screen after more than 1 attempt?

A: Please contact your local Pioneer service organisation for a product check-up.

Contact Information

Pioneer Customer Support Center

<http://www.pioneer.eu>

Copyright(c) 2017 Pioneer Corporation