

System Firmware Update Instructions for SPH-EVO64DAB

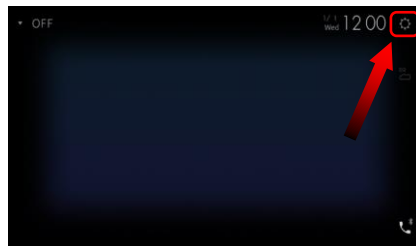
REMARKS:

- ✓ If you have any difficulty carrying out these instructions, please contact Pioneer Customer Support. Once upgraded to this version, it is not possible to downgrade to a lower version.
- ✓ Please download and print these instructions before downloading and installing the firmware update, it is important that you complete all steps correct and in the order described below.
- ✓ Never turn your unit off or disconnect the USB storage device while the firmware is being updated.
- ✓ You can only update the firmware when the vehicle is stopped and the parking brake is engaged.

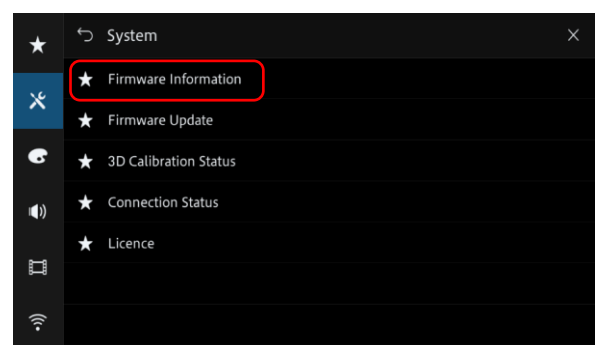
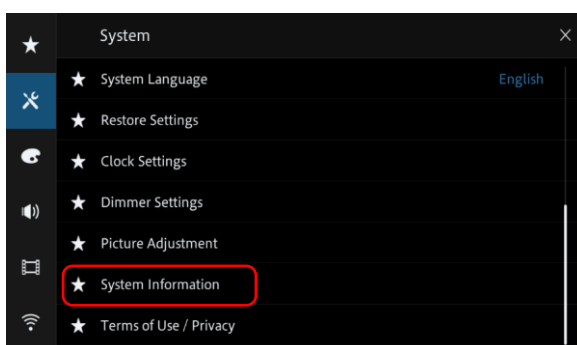
A. Displaying the firmware version

Check whether the firmware of your unit needs to be updated by checking the version number of the firmware.

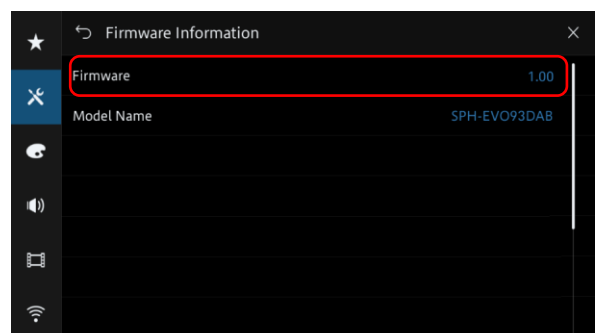
1. Touch the following key:



2. The "System" screen appears, scroll down the list.
3. Touch [System Information], next touch [Firmware Information].



4. After the "Firmware Information" screen appears, check the firmware version; when the Version is lower than **2.01**, it is necessary to update the firmware.



B. Downloading the Firmware Update Files

1. Download the correct firmware file to a folder on your computer.
→ **SPH-EVO64DAB_FW_Ver201.ZIP**
2. Double click the ZIP file to open it.
3. Extract and save the file "**SPH-EVO64DAB.avh**" to a folder on your computer.

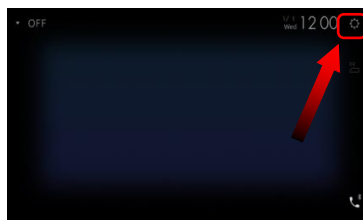
C. Updating the firmware on your Unit

IMPORTANT

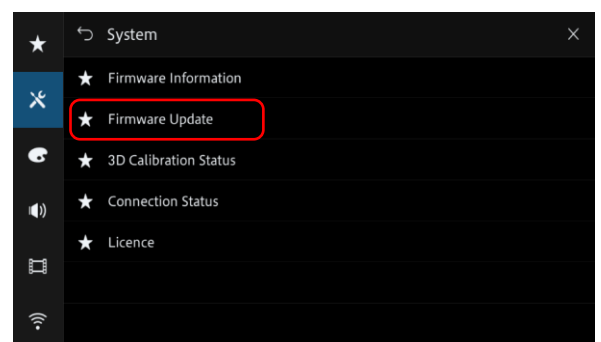
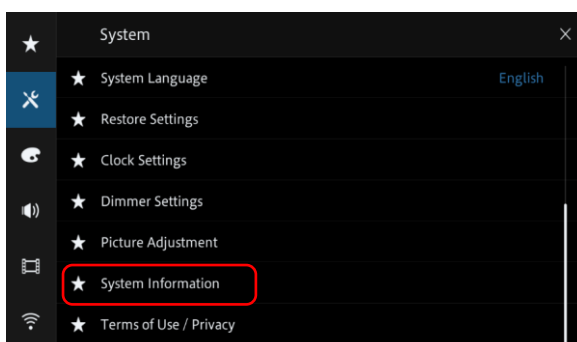
- ✓ Please DO NOT perform this firmware update if the model number of your Pioneer unit is anything other than SPH-EVO64DAB
- ✓ Ensure that the correct update file is located within the root (top) folder of your USB storage device. There should be no other files on the USB storage device.
- ✓ While your unit is being updated, DO NOT turn off the system's power and DO NOT touch the unit's touch panel screen as this may result in severe damage to your unit.
- ✓ DO NOT remove the USB storage device during the firmware update.
- ✓ Performing the firmware update will restore all settings to their default values.
- ✓ Before you start the update procedure, make sure to disconnect any mobile devices that are currently connected to your unit.

PROCEDURE:

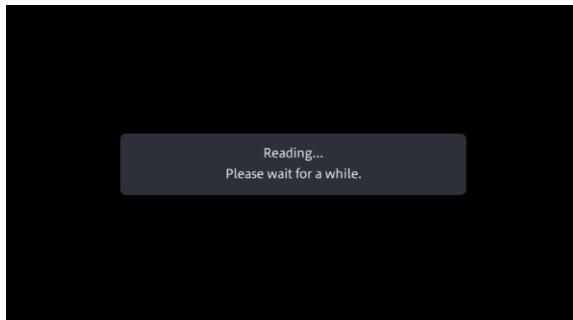
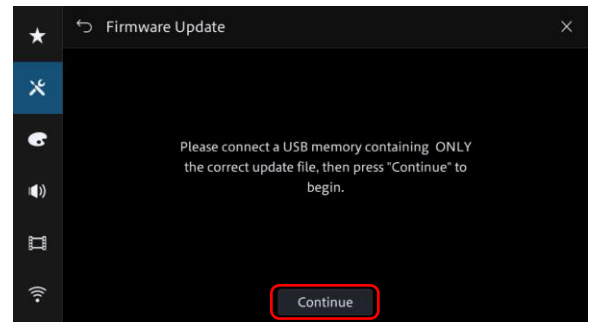
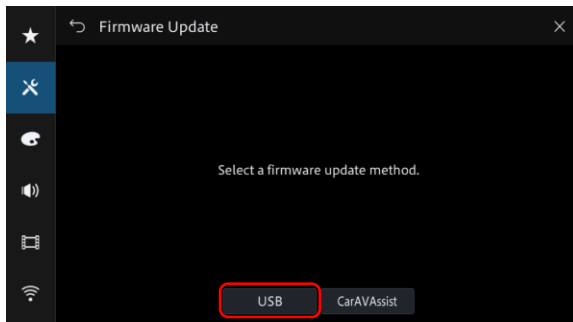
1. Connect a blank (**FAT32 formatted**) USB storage device with a minimum capacity of 2GB to your computer, **next locate the correct update file and copy it onto the Root (top) folder of USB storage device.**
2. Connect the USB storage device to the USB port
3. On your unit; set the audio source to OFF.
4. Touch the following keys in the following order.



5. The "System" screen appears, scroll down the list.
6. Touch [System Information], next touch [Firmware Update].

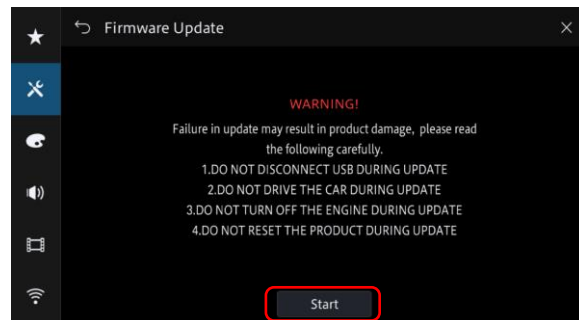


7. The "Firmware Update" screen appears. Touch [USB], next touch [Continue] to display the data transfer mode.

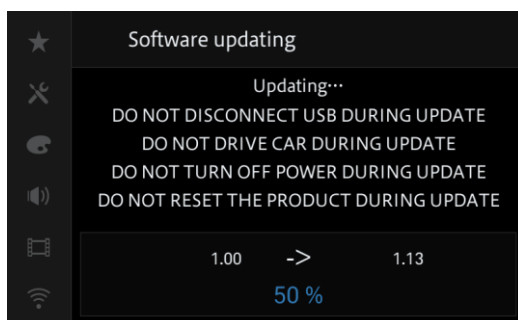


It will take a while to load, so please wait.

8. Read the "WARNING," then touch the [Start] button to start the update process. If it shows "ERROR" on the display, try another USB device.

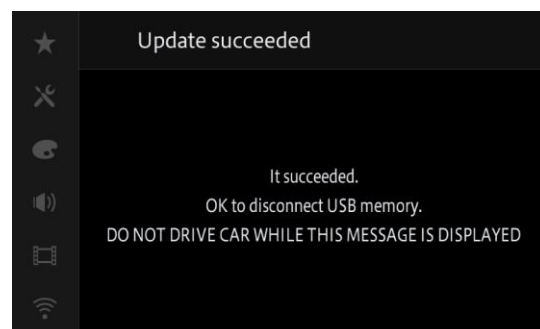


9. The progress is displayed during the update

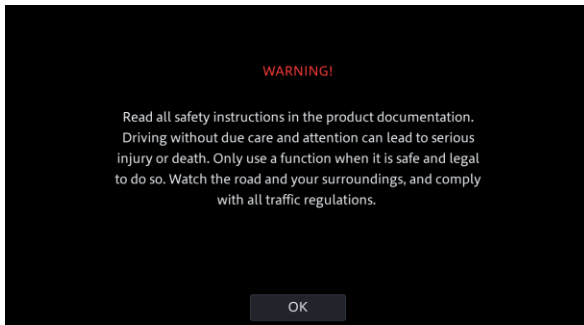


DO NOT turn your unit off or eject the USB storage device while the firmware is being updated.

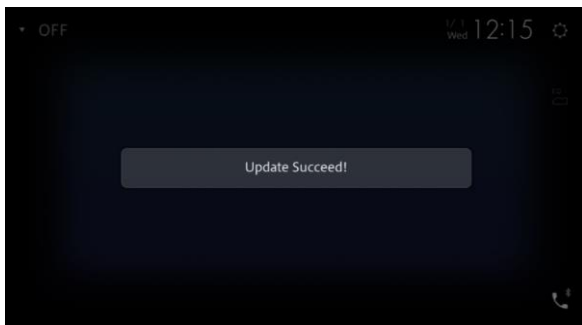
10. Display will show "It succeeded..." when the update is complete. Please disconnect the USB storage device.



11. The product will reboot after the update is finished. Do not touch anything even when the screen is blacked out. After it has finished rebooting, the screen will return to the menu screen.



12. The firmware update is now complete. Your Pioneer AV Receiver is now ready for use.



Check the firmware version as described in "Displaying the firmware version" to confirm that the update was successful.

Firmware Update FAQ

Q: What if my set does not switch on automatically after updating the software or starts up more than once?

A: Turn off the ignition key and turn on again – the set should start up now.

Q: What if I cannot upgrade my set / the set does not show the start up screen after more than 1 attempt?

A: Please contact your local Pioneer service organisation for a product check-up.

Contact Information

Pioneer Customer Support Center

<http://www.pioneer.eu>

Copyright(c) 2022 Pioneer Corporation